



Monitoring Efforts in Wonder Lake and the Upper Nippersink Creek Watershed: A pre-dredging update

Ryan Jackson

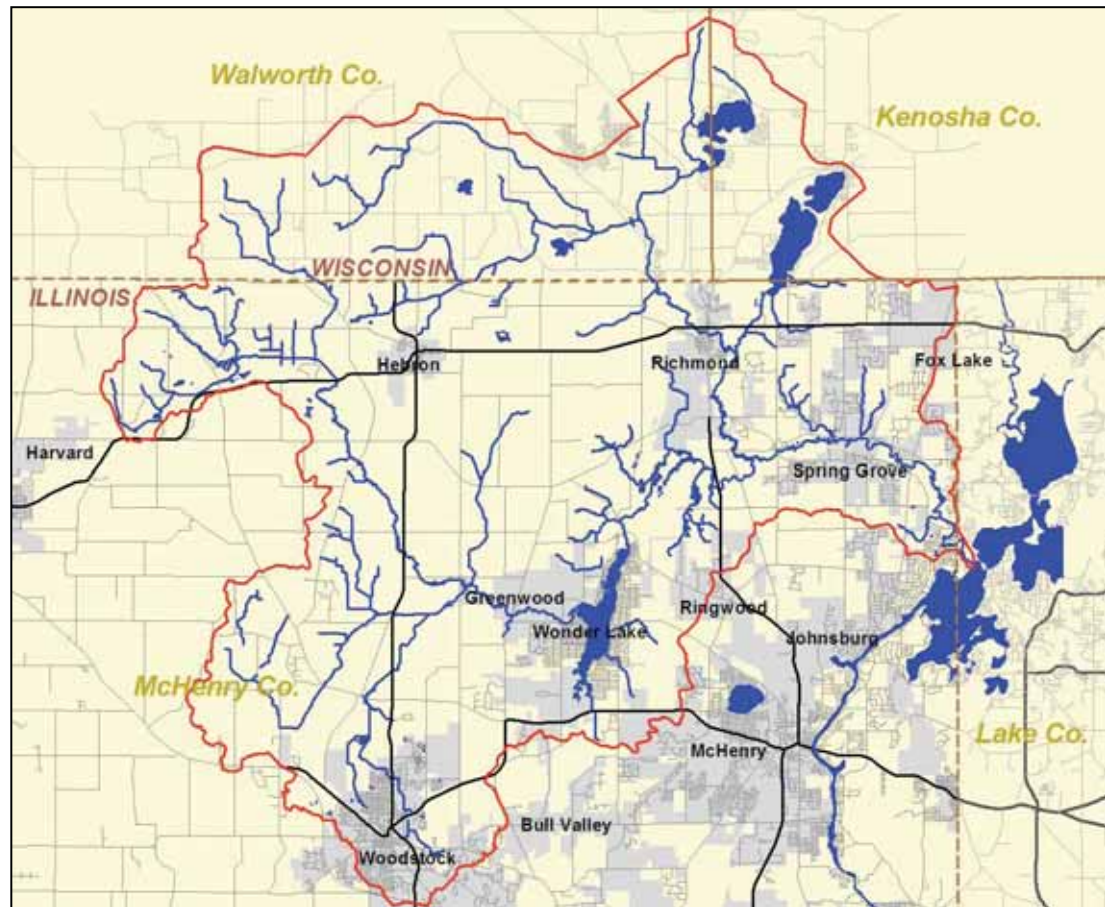
Hydrologist, U.S. Geological Survey Illinois Water Science Center

Randy Stowe

Lake Manager, Wonder Lake

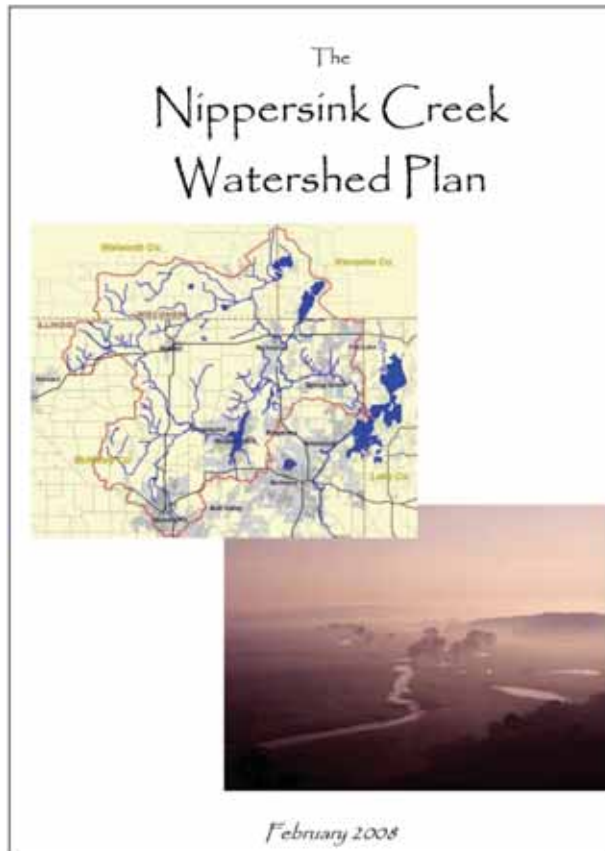
Nippersink Creek Watershed

202 square mile watershed, draining to the Fox River, with Wonder Lake, an 830 acre impoundment



Nippersink Creek is listed by IEPA as "impaired" for fecal coliform from an unknown source

Watershed Plan Protection Objectives:

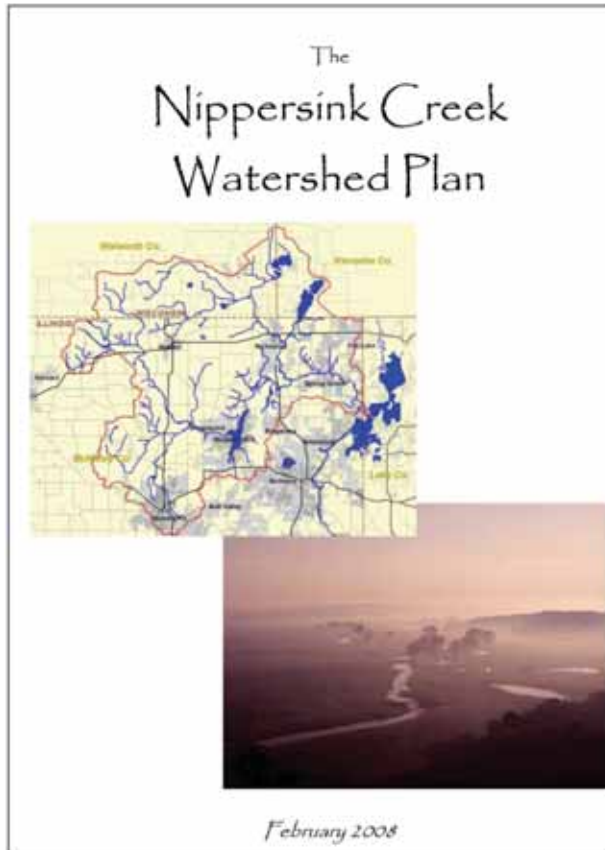


Objective 17:

Provide multiple opportunities for assessing measurable watershed plan implementation milestones, such as whether pollutant loading reductions are being achieved over time; evaluating the effectiveness of proactive watershed protection measures; and whether social behavior has changed because of the implementation of the plan.

www.nippersink.org

General Watershed Plan Recommendation:

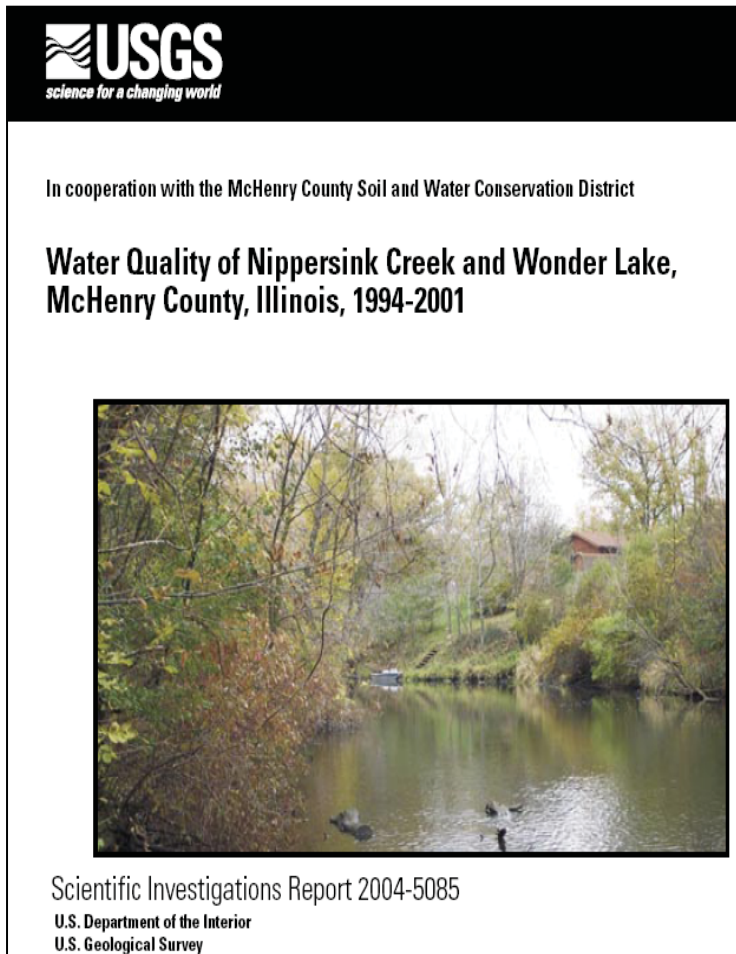


www.nippersink.org

GWR-1

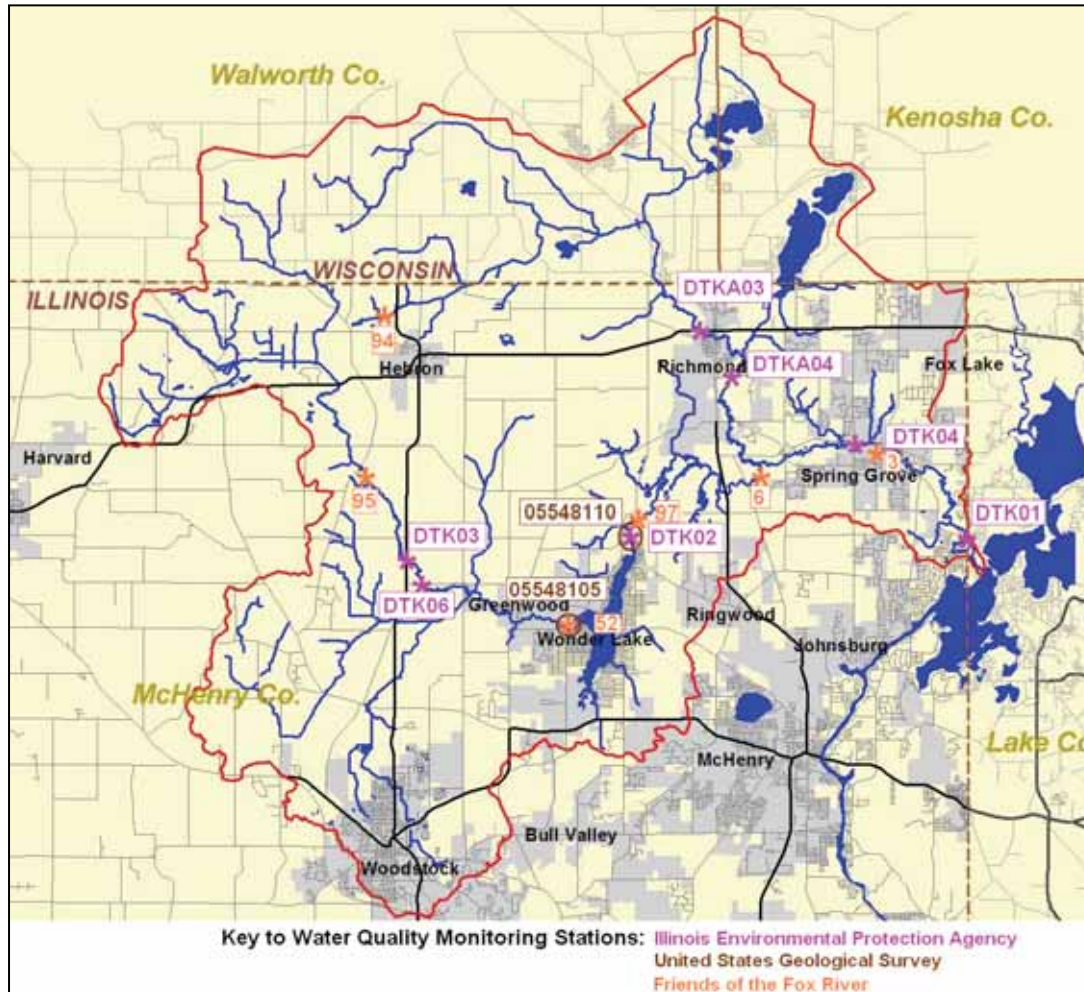
Implement an expanded water quality and biological monitoring program throughout the Nippersink Creek Watershed.

Water Quality of Nippersink Creek and Wonder Lake Study (2004)



- Watershed planning efforts over a 15 year period reduced the annual sediment load from Nippersink Creek to Wonder Lake from 33,000 to 12,000 cubic yards per year.
- Lake sediment core samples show no elevated levels of regulated contaminants.

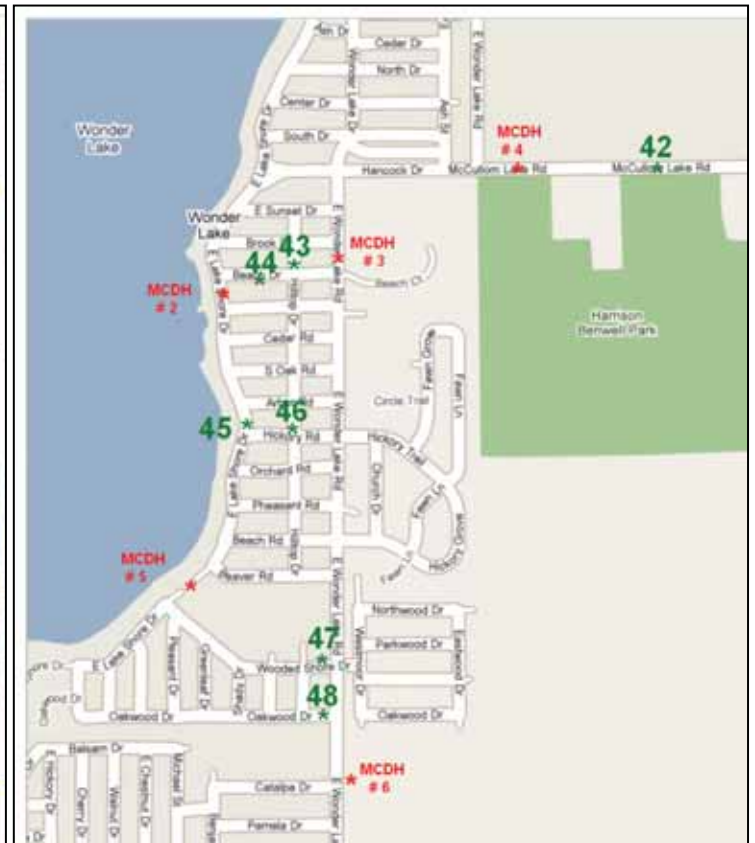
Existing Water Quality Monitoring Sites



Expanded Wonder Lake Monitoring

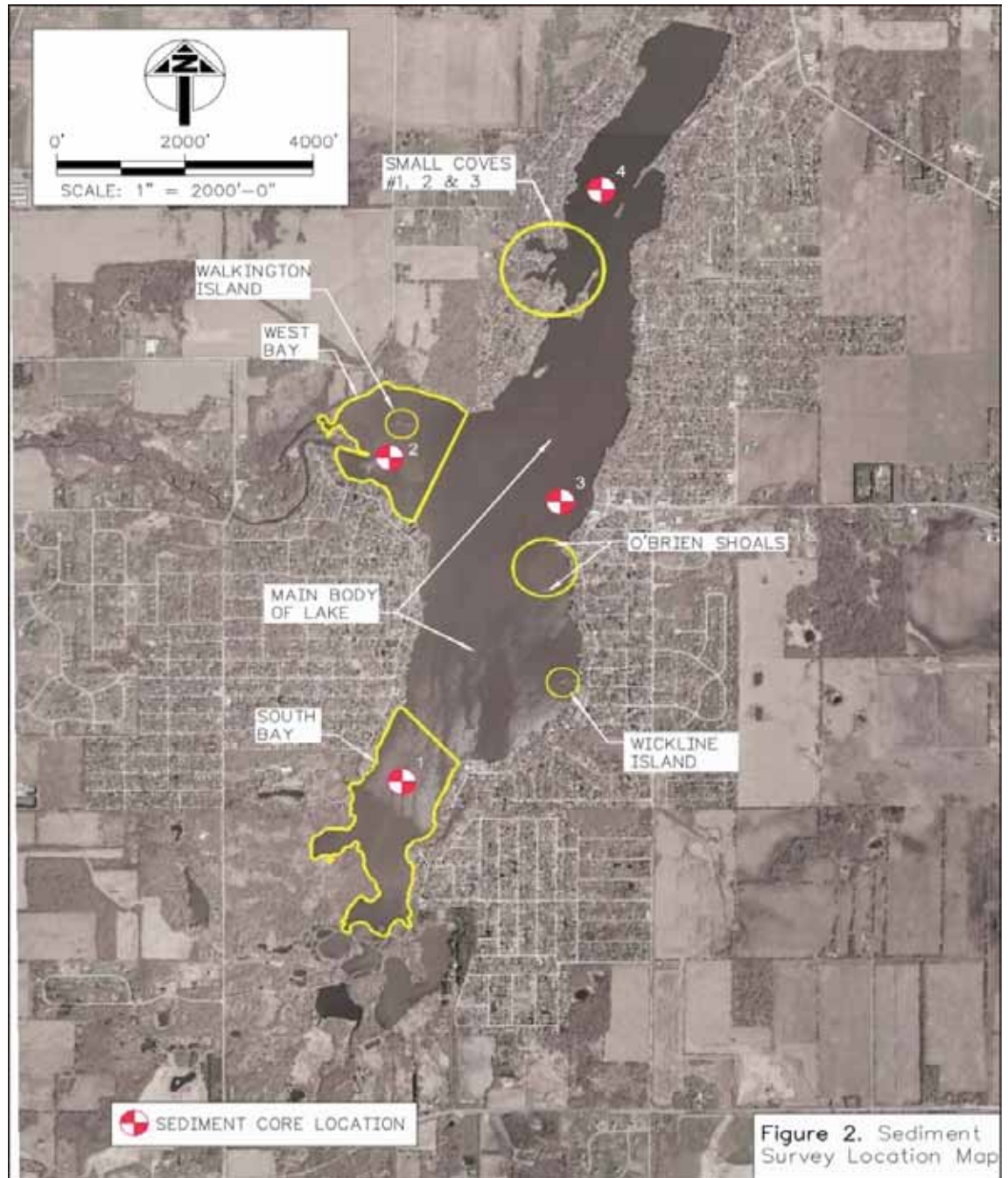


Ecolipalooza™



Wonder Lake Dredging Project

A \$5.9 million Special Service Area (SSA) funded project to remove up to 1 million cubic yards of accumulated sediment.



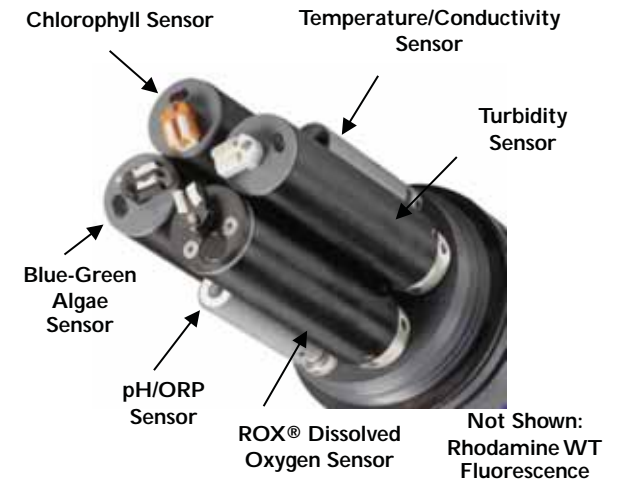


USGS Monitoring/Synoptic Surveys

- (2009-Present) Monitoring of discharge and suspended sediment in Nippersink Creek above Wonder Lake
- (2010) Pre-dredging synoptic water quality, water velocity, and bathymetric survey of Wonder Lake
 - Targeted August 2010 based on past water quality data
- (2015?) Post-dredging synoptic survey

EcoMapper Autonomous Underwater Vehicle (AUV)

- Capable of diving to 200 ft depth at up to 6.75 ft/s
- 10+ hours of run time
- 1 Hz sampling rate



*New in 2010

Survey Missions

Wonder Lake (Illinois)
August 2010

EcoMapper Data Sets*

- WL_South_EM_QWDataPoints
- WL_Middle_EM_QWDataPoints
- WL_North_EM_QWDataPoints

*Surface Water (Approx. 0.5 ft depth)

Mean Water Surface Elevation During Survey: 802.774 NAD83
*Provisional data subject to revision



Wonder Lake (Illinois)
August 2010

Sample Hour

- 8
- 9
- 10
- 11
- 12
- 13
- 14

*Surface Water (Approx. 0.5 ft depth)

Mean Water Surface Elevation During Survey: 802.774 NAD83
*Provisional data subject to revision



Bathymetry

Tributaries Sampled Aug. 13, 2010

Wonder Lake (Illinois)
August 2010

Bed Elevation (ft; NGVD29)



Mean Water Surface Elevation During Survey: 802.77 ft NGVD29
*Provisional data subject to revision.

Wonder Lake (Illinois)
August 2010

Bed Elevation (ft; NGVD29)

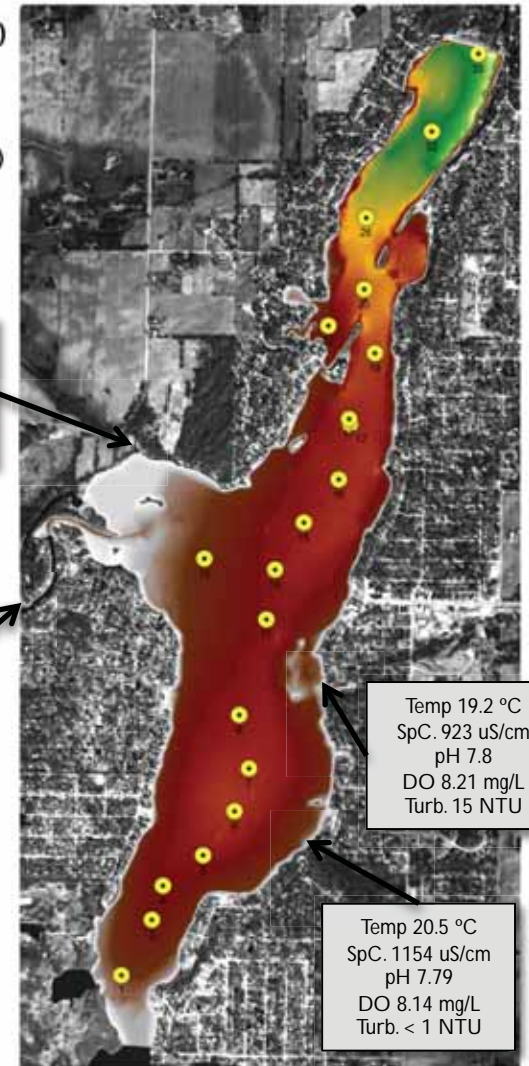


Temp 22.8 °C
SpC. 691 uS/cm
pH 7.84
DO 6.31 mg/L
Turb. < 1 NTU

Temp 21.4 °C
SpC. 896 uS/cm
pH 7.98
DO 8.2 mg/L
Turb. 2.9 NTU
Q 46 cfs

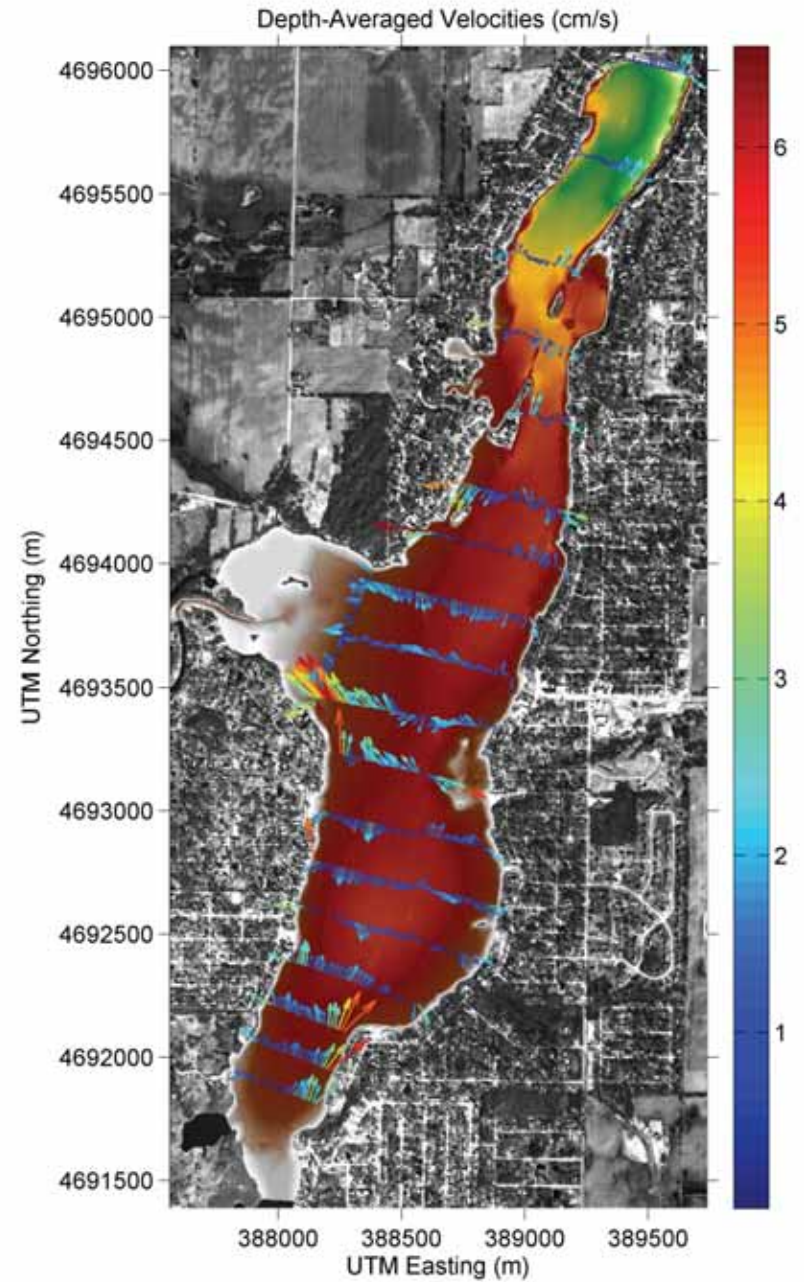
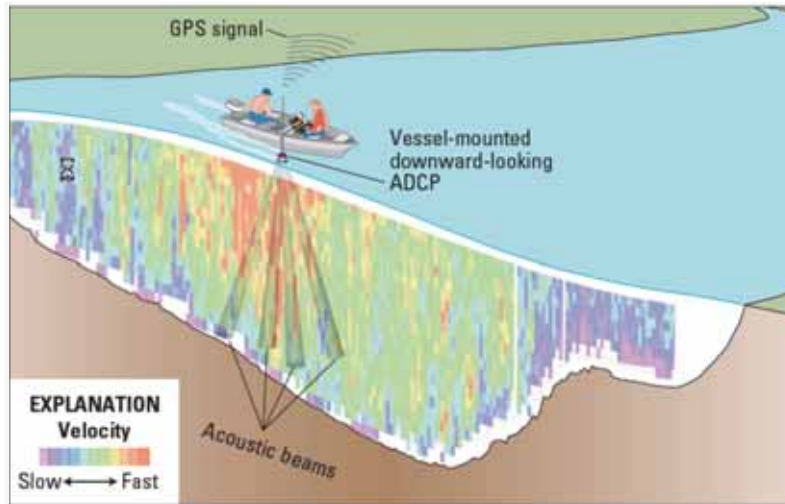
Temp 19.2 °C
SpC. 923 uS/cm
pH 7.8
DO 8.21 mg/L
Turb. 15 NTU

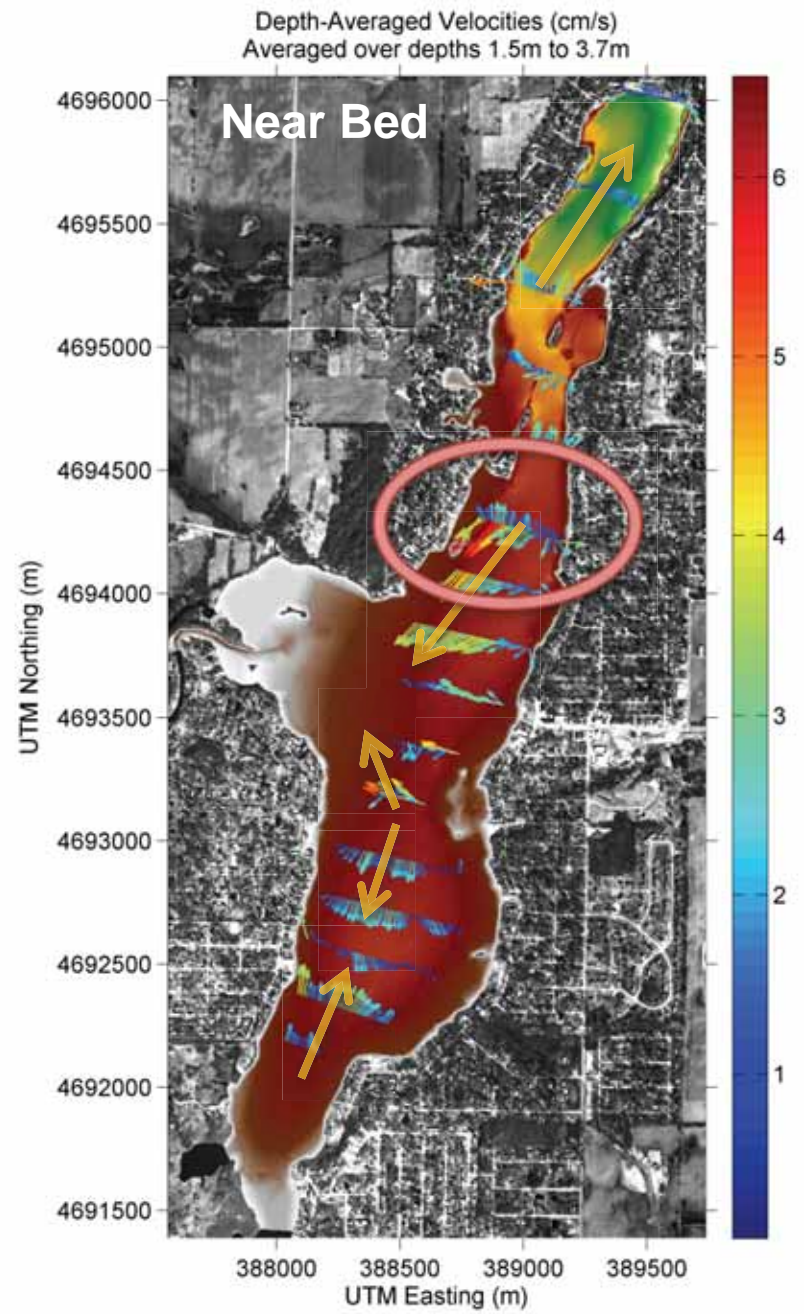
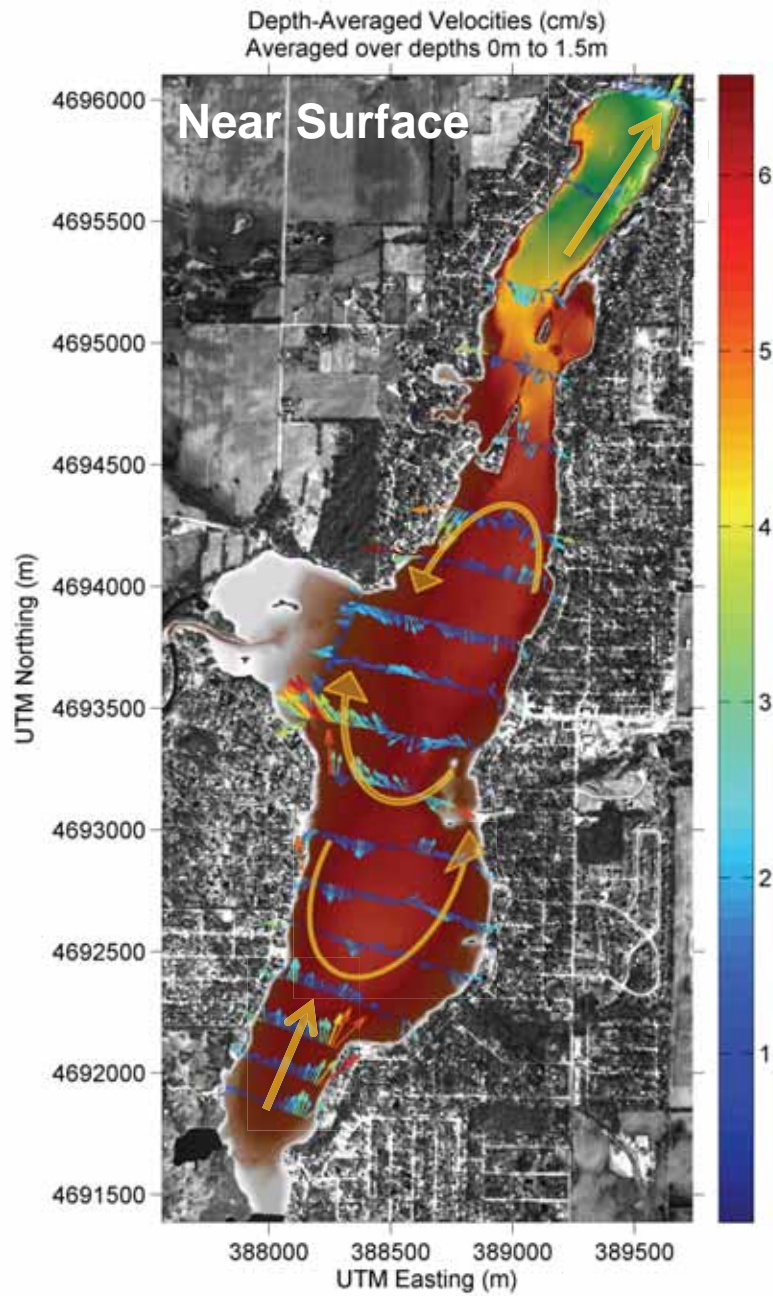
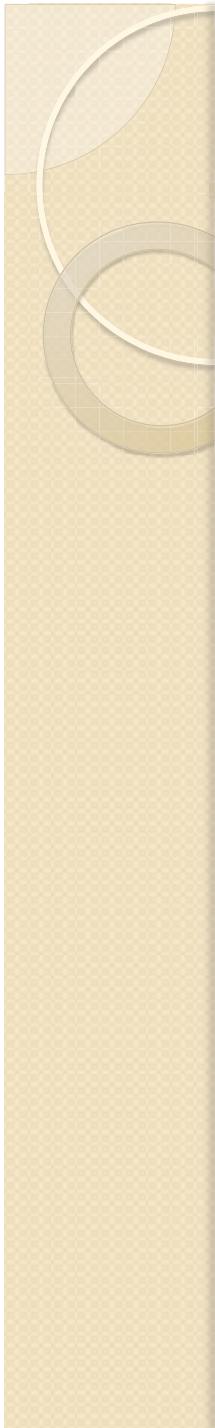
Temp 20.5 °C
SpC. 1154 uS/cm
pH 7.79
DO 8.14 mg/L
Turb. < 1 NTU

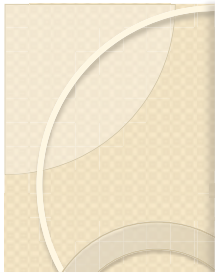


Mean Water Surface Elevation During Survey: 802.77 ft NGVD29
*Provisional data subject to revision.

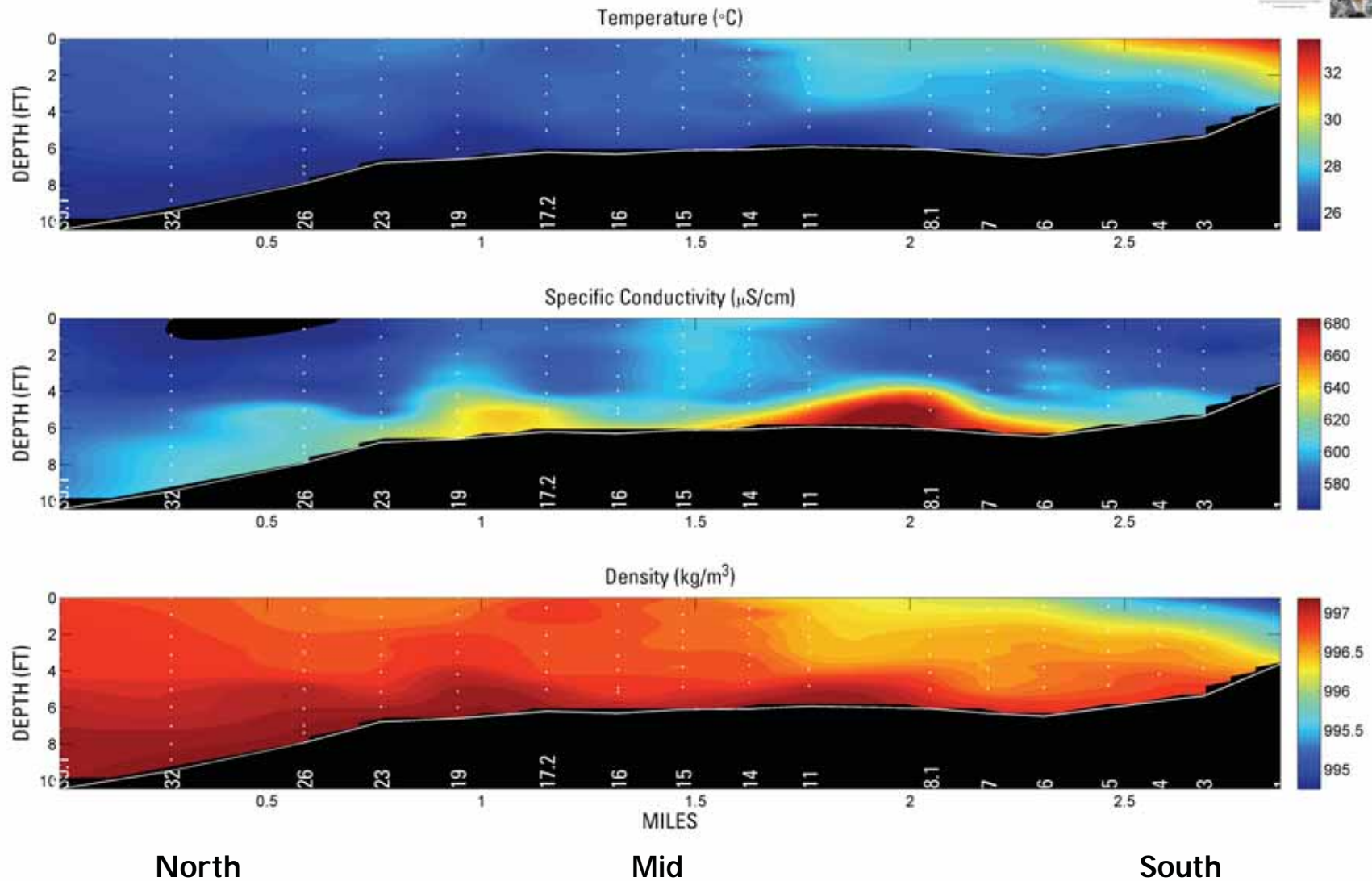
Water Velocity

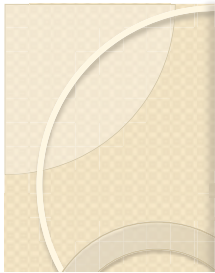




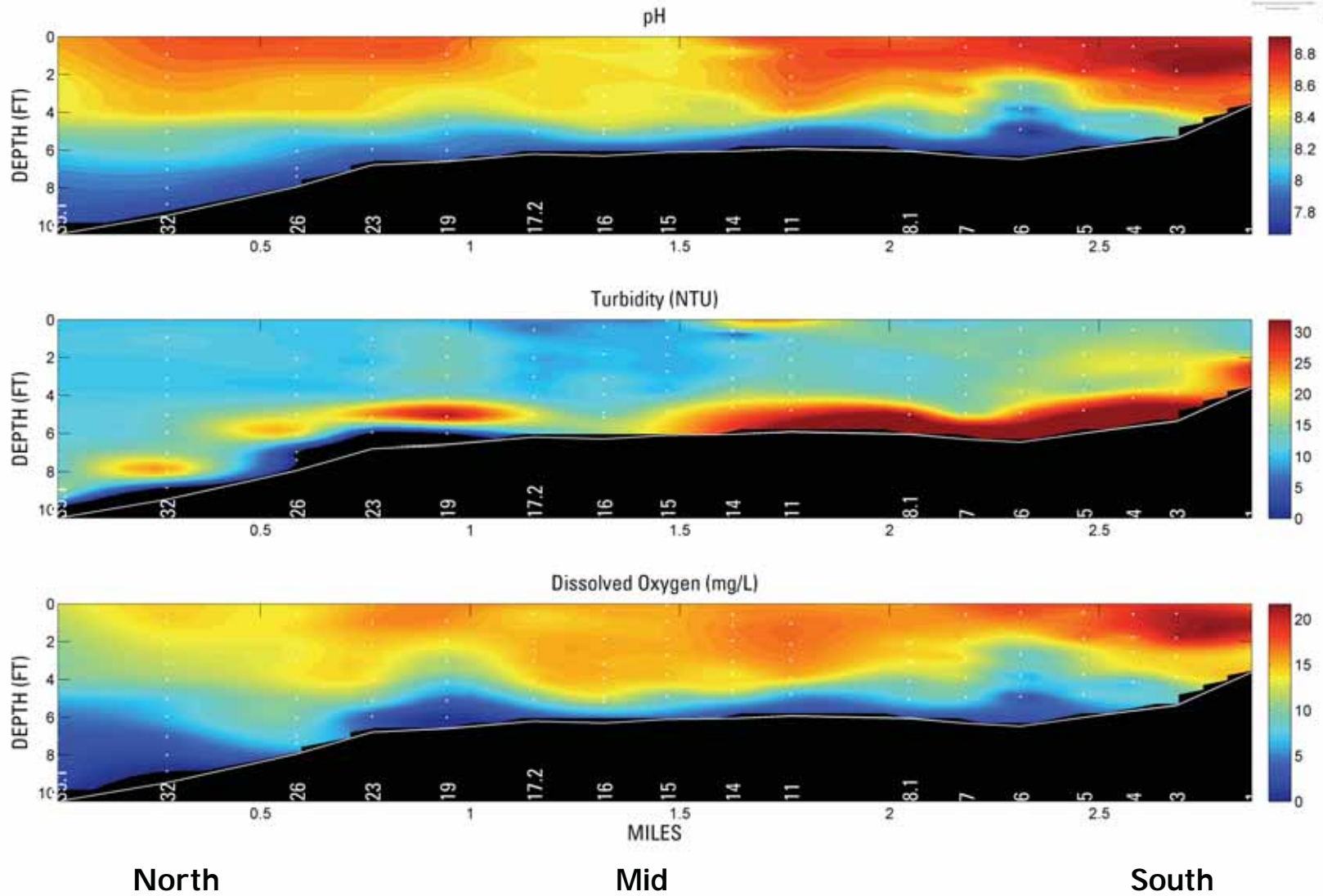


Water Quality Profiles





Water Quality Profiles

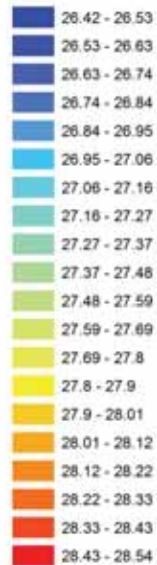


Surface Water Quality Distributions (North Basin)

Boat Wake

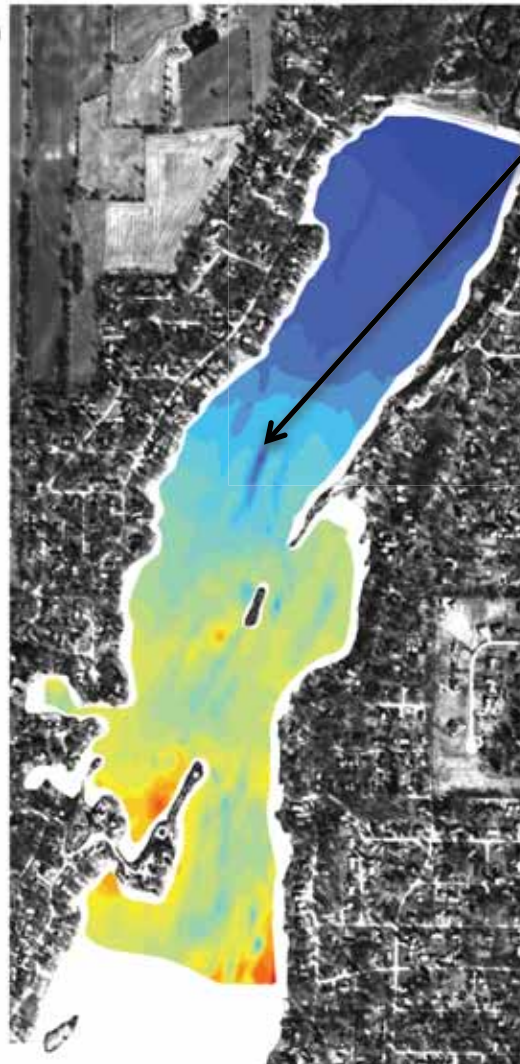
Wonder Lake (Illinois)
August 2010

Water Temperature*
(deg. C)



*Surface Water (Approx. 0.5 ft depth)

Mean Water Surface Elevation During Survey: 802.77 ± 0.00229
*Vertical axis subject to revision



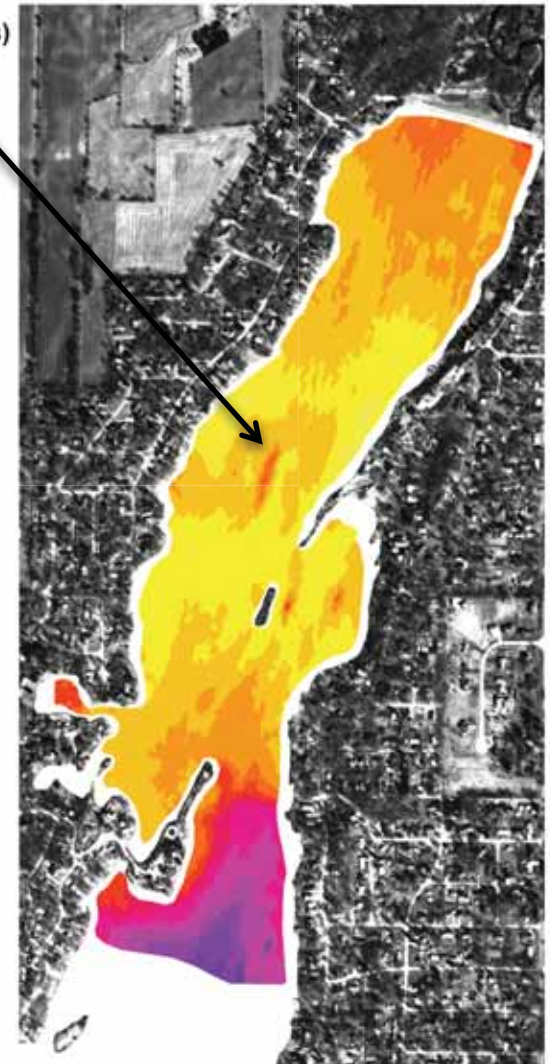
Wonder Lake (Illinois)
August 2010

Specific Conductance*
(mS/cm)



*Surface Water (Approx. 0.5 ft depth)

Mean Water Surface Elevation During Survey: 802.77 ± 0.00229
*Vertical axis subject to revision



Surface Water Quality Distributions (North Basin)

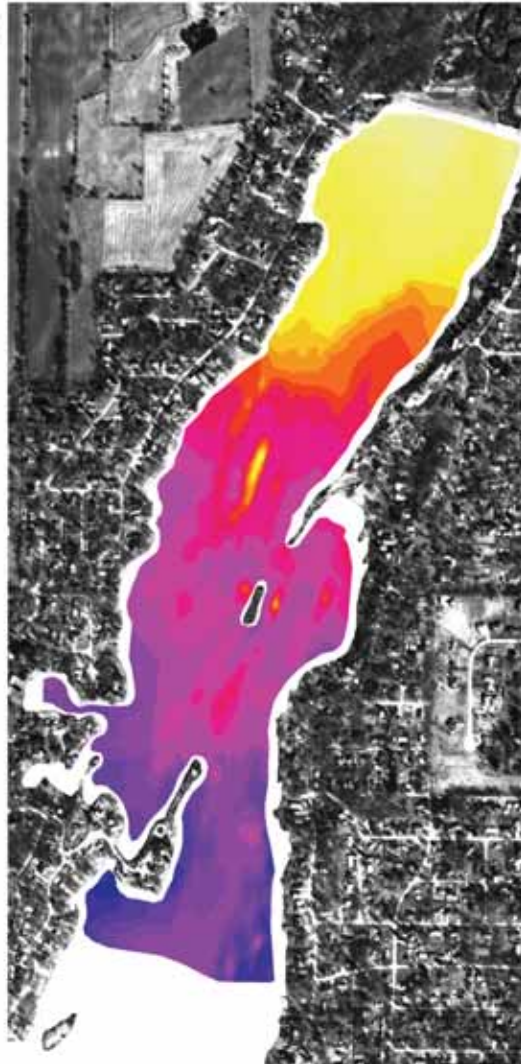
Wonder Lake (Illinois)
August 2010

Dissolved Oxygen*
(mg/L)



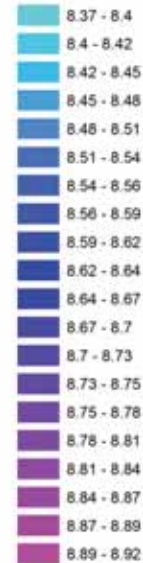
*Surface Water (Approx. 0.5 ft depth)

*Mean Water Surface Elevation During Survey: 802.77 ± 0.00208
*Horizontal Data subject to revision



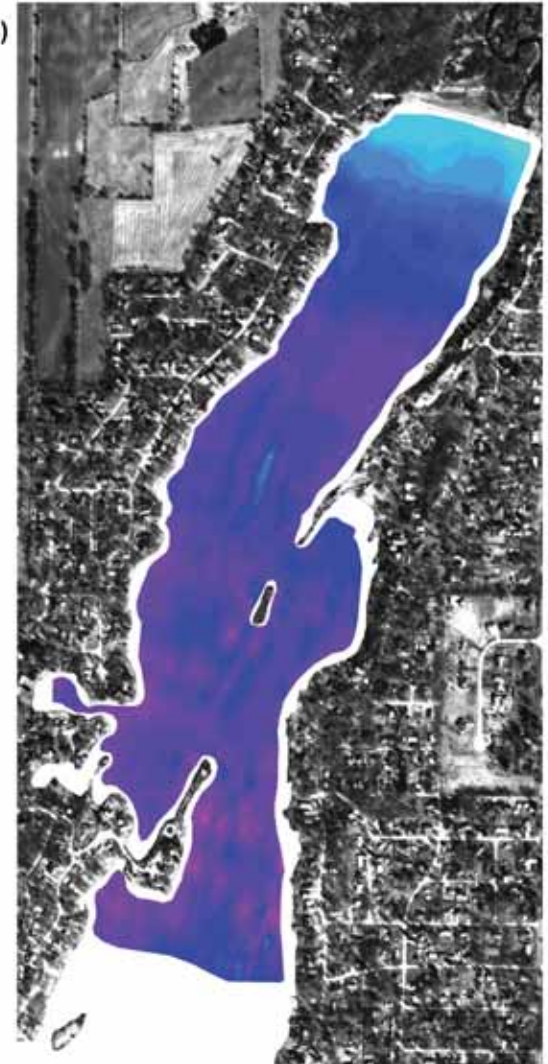
Wonder Lake (Illinois)
August 2010

pH*



*Surface Water (Approx. 0.5 ft depth)

*Mean Water Surface Elevation During Survey: 802.77 ± 0.00208
*Horizontal Data subject to revision



Surface Water Quality Distributions (North Basin)

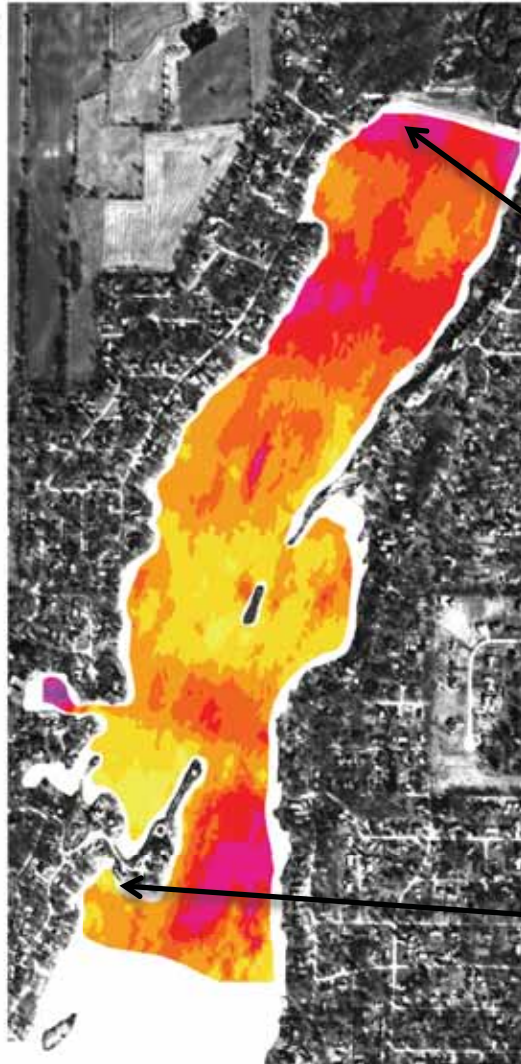
Wonder Lake (Illinois)
August 2010

Chlorophyll A*
(ug/L)



*Surface Water (Approx. 0.5 ft depth)
Estimated using YSI 6025 Chlorophyll
sensor post-calibrated using
Chlorophyll A lab sample

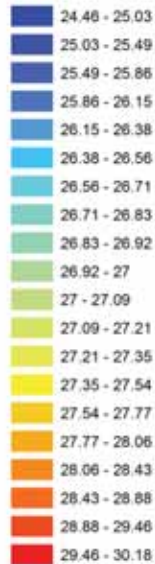
*Mean Water Surface Elevation During Survey: 802.77 ft NGVD29
*Reservoir Area: 642.0 acres



Surface Water Quality Distributions (Middle Basin)

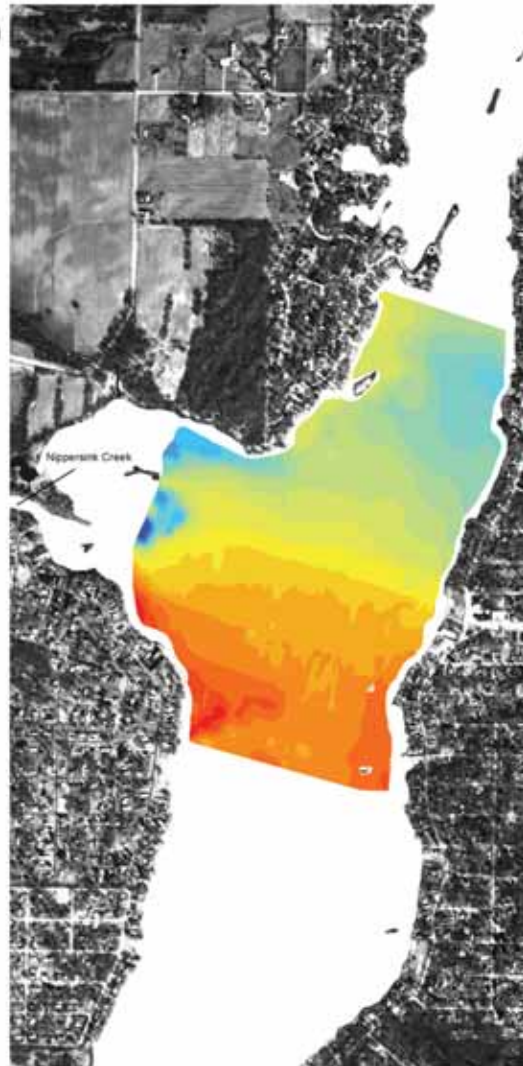
Wonder Lake (Illinois)
August 2010

Water Temperature*
(deg. C)



*Surface Water (Approx. 0.5 ft depth)

Mean Water Surface Elevation During Survey: 802.77 ± 0.00208
*Elevation data subject to revision



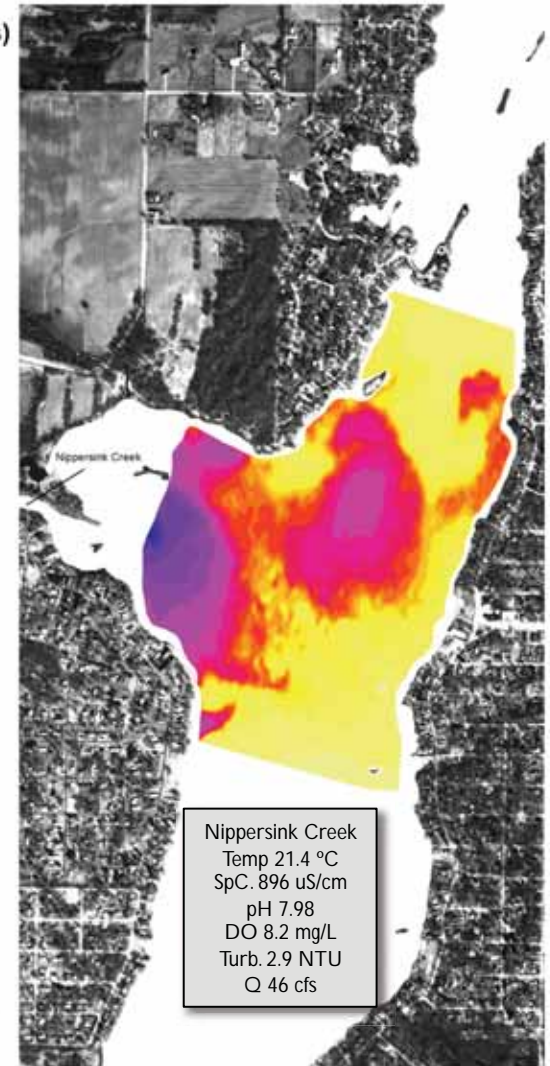
Wonder Lake (Illinois)
August 2010

Specific Conductance*
(mS/cm)



*Surface Water (Approx. 0.5 ft depth)

Mean Water Surface Elevation During Survey: 802.77 ± 0.00208
*Elevation data subject to revision



Nippersink Creek
Temp 21.4 °C
SpC: 896 uS/cm
pH 7.98
DO 8.2 mg/L
Turb. 2.9 NTU
Q 46 cfs

Surface Water Quality Distributions (Middle Basin)

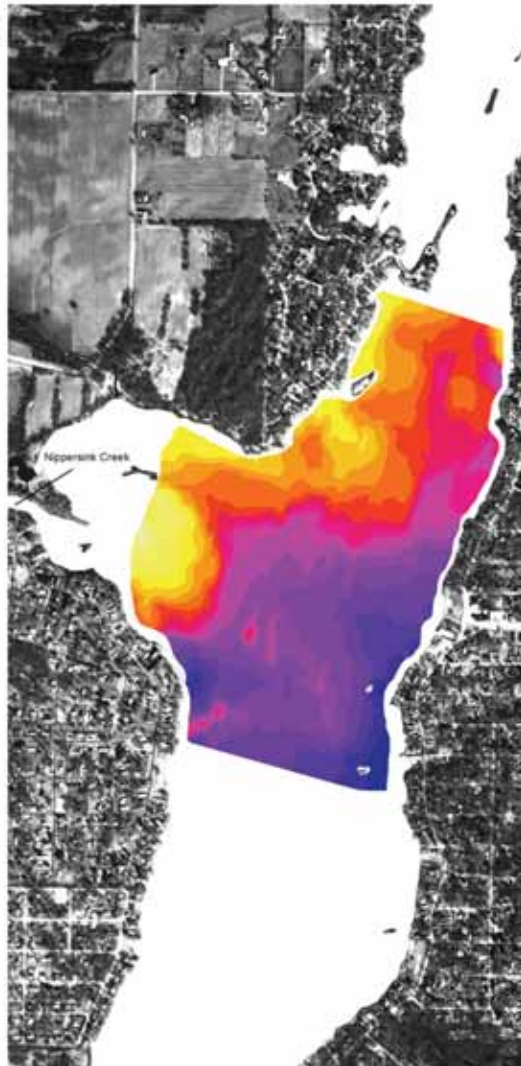
Wonder Lake (Illinois)
August 2010

Dissolved Oxygen*
(mg/L)



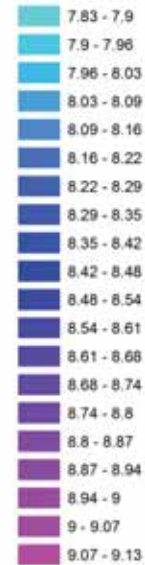
*Surface Water (Approx. 0.5 ft depth)

*Mean Water Surface Elevation During Survey: 802.77 ± 0.00228
*Horizontal data subject to revision



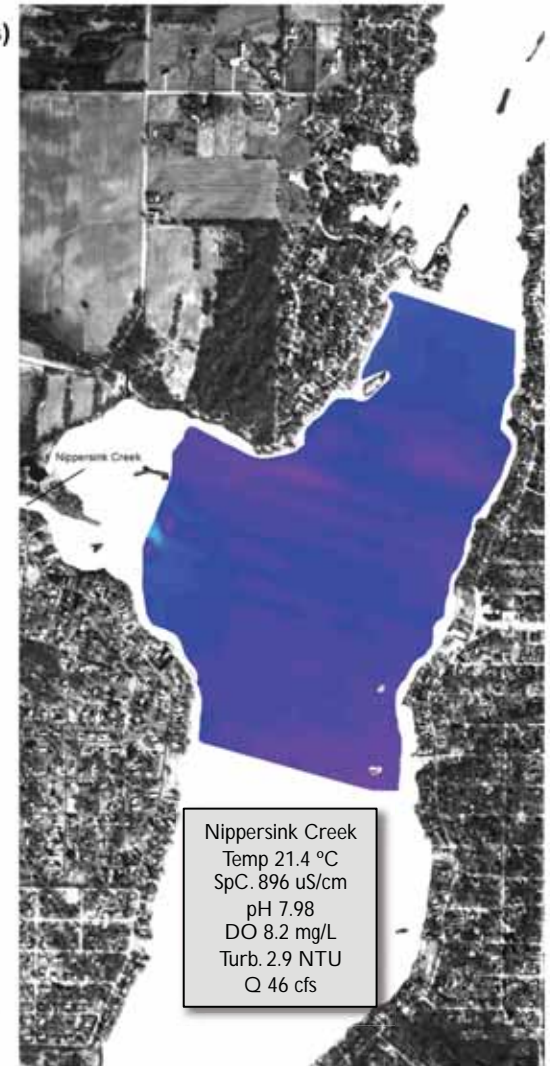
Wonder Lake (Illinois)
August 2010

pH*



*Surface Water (Approx. 0.5 ft depth)

*Mean Water Surface Elevation During Survey: 802.77 ± 0.00228
*Horizontal data subject to revision



Nippersink Creek
Temp 21.4 °C
SpC: 896 uS/cm
pH 7.98
DO 8.2 mg/L
Turb. 2.9 NTU
Q 46 cfs

Surface Water Quality Distributions (Middle Basin)

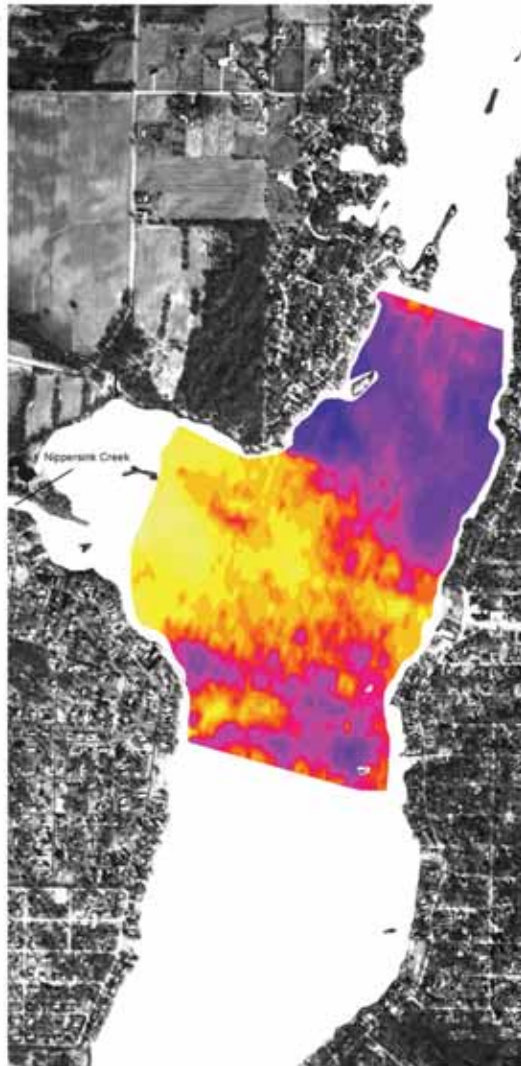
Wonder Lake (Illinois)
August 2010

Chlorophyll A*
(ug/L)



*Surface Water (Approx. 0.5 ft depth)
Estimated using YSI 6025 Chlorophyll
sensor post-calibrated using
Chlorophyll A lab sample

*Mean Water Surface Elevation During Survey: 802.77 ± 0.00228
*Vertical datum: NAD 83 subject to revision



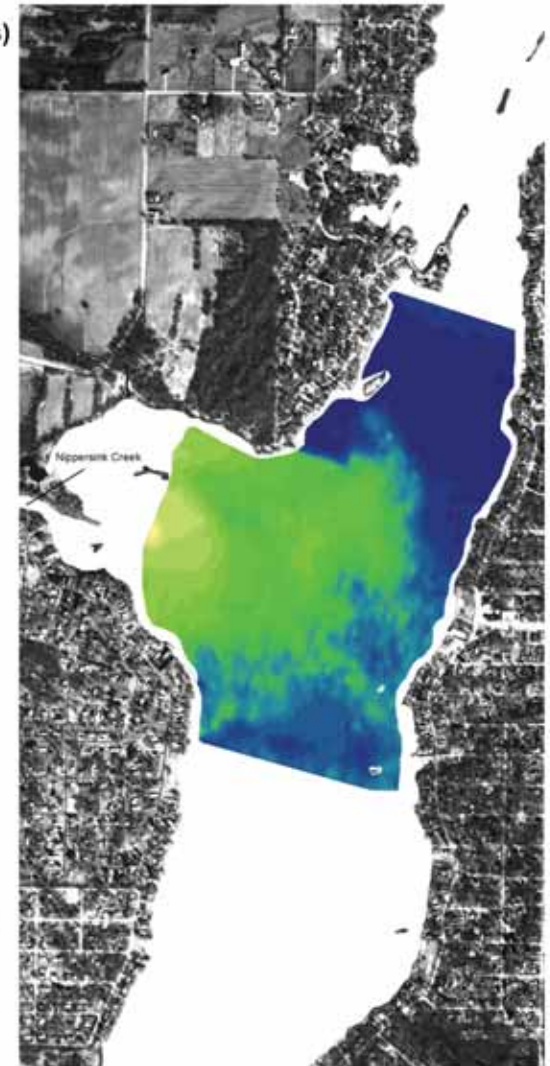
Wonder Lake (Illinois)
August 2010

Blue-Green Algae*
(cells/mL)



*Surface Water (Approx. 0.5 ft depth)
Estimated using YSI 6131 Phycoocyanin
sensor calibrated using DI water (zero-
point calibration for relative
concentrations)

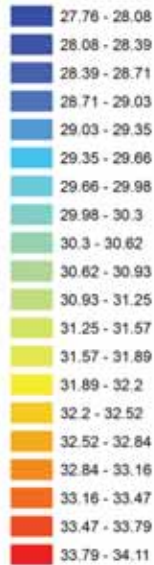
*Mean Water Surface Elevation During Survey: 802.77 ± 0.00228
*Vertical datum: NAD 83 subject to revision



Surface Water Quality Distributions (South Basin)

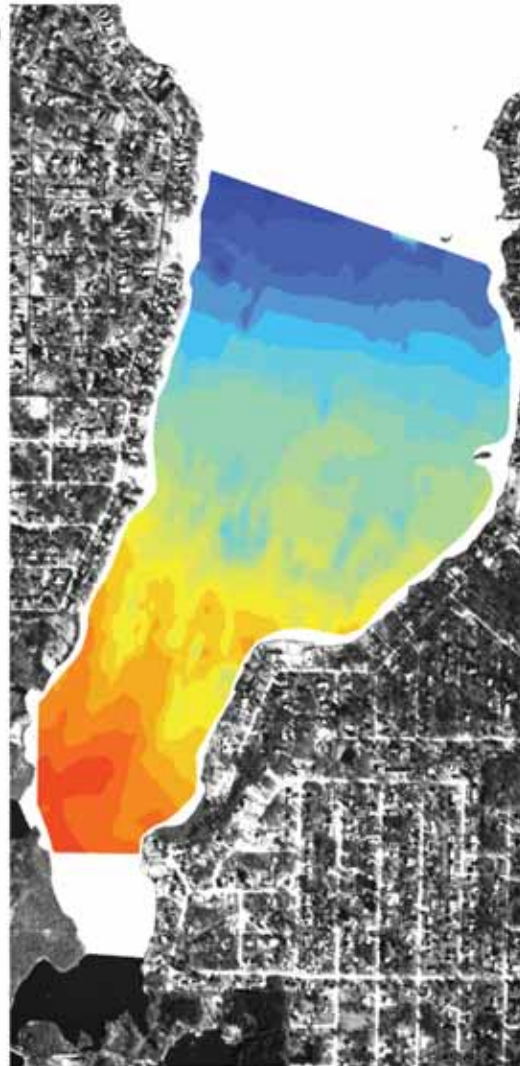
Wonder Lake (Illinois)
August 2010

Water Temperature*
(deg. C)



*Surface Water (Approx. 0.5 ft depth)

Mean Water Surface Elevation During Survey: 802.77 ± 0.0028
*Uncertainty based on standard deviation



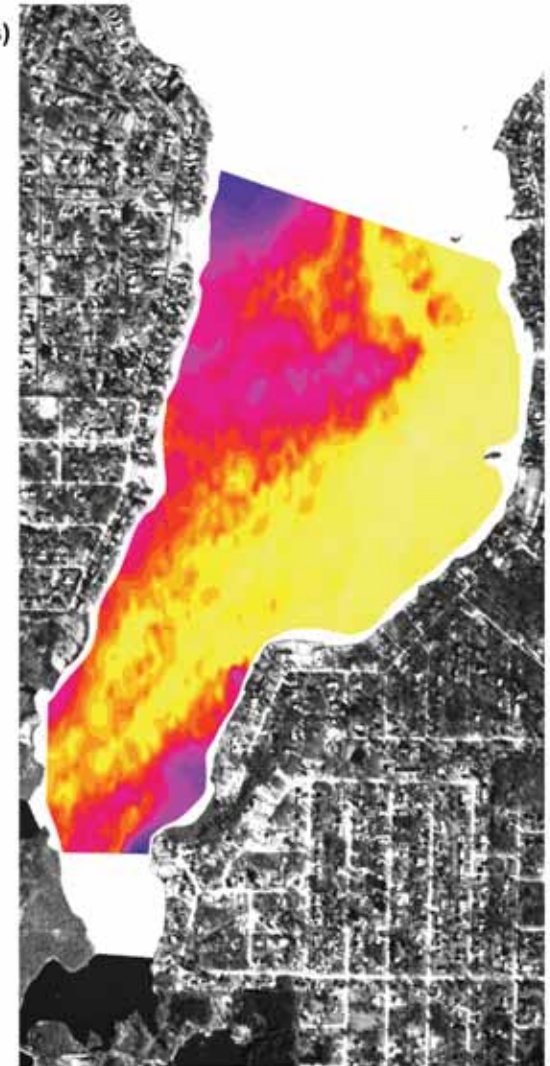
Wonder Lake (Illinois)
August 2010

Specific Conductance*
(mS/cm)



*Surface Water (Approx. 0.5 ft depth)

Mean Water Surface Elevation During Survey: 802.77 ± 0.0028
*Uncertainty based on standard deviation



Surface Water Quality Distributions (South Basin)

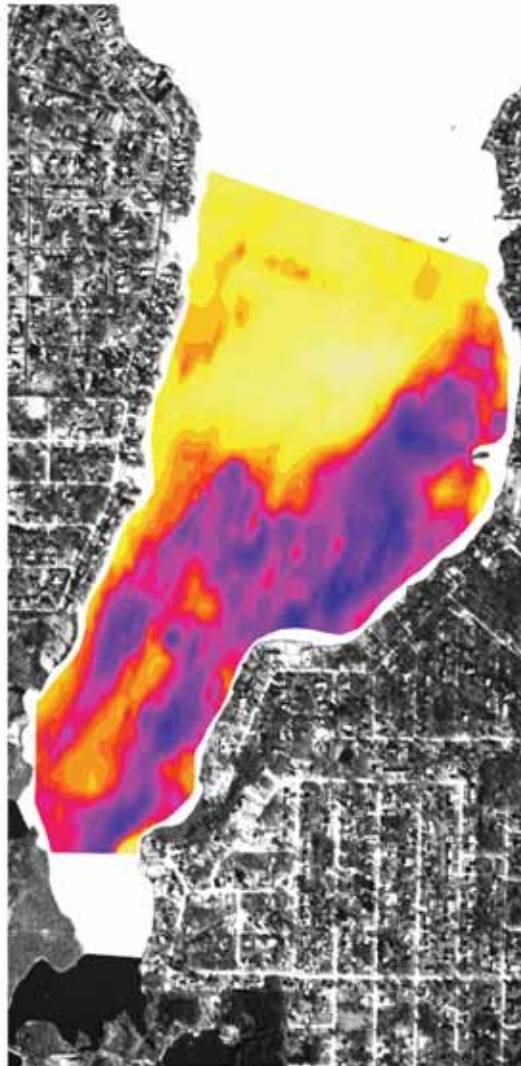
Wonder Lake (Illinois)
August 2010

Dissolved Oxygen*
(mg/L)



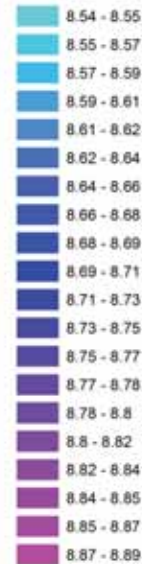
*Surface Water (Approx. 0.5 ft depth)

Mean Water Surface Elevation During Survey: 802.77 ± 0.00228
*Horizontal data subject to revision



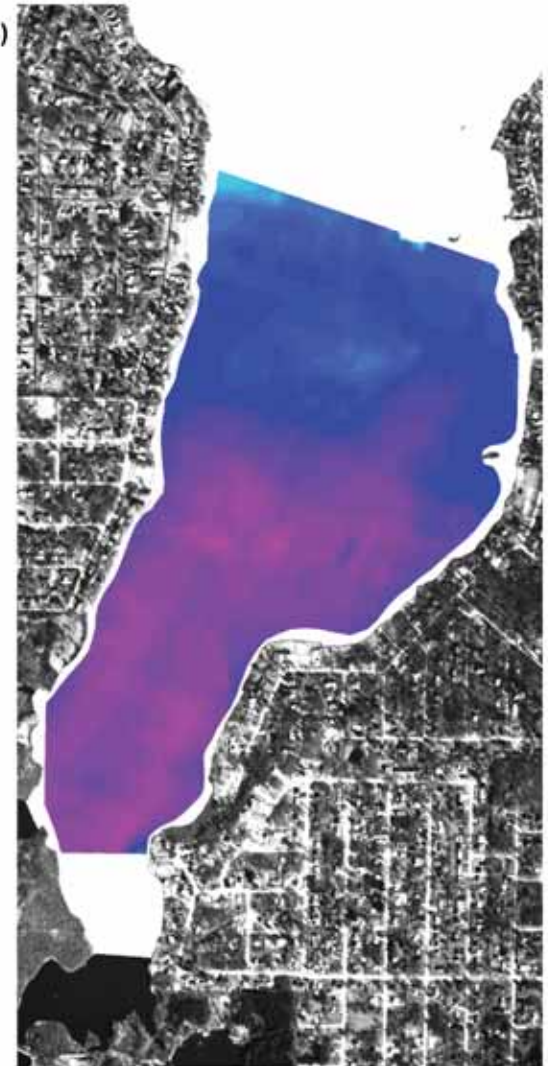
Wonder Lake (Illinois)
August 2010

pH*



*Surface Water (Approx. 0.5 ft depth)

Mean Water Surface Elevation During Survey: 802.77 ± 0.00228
*Horizontal data subject to revision



Surface Water Quality Distributions (South Basin)

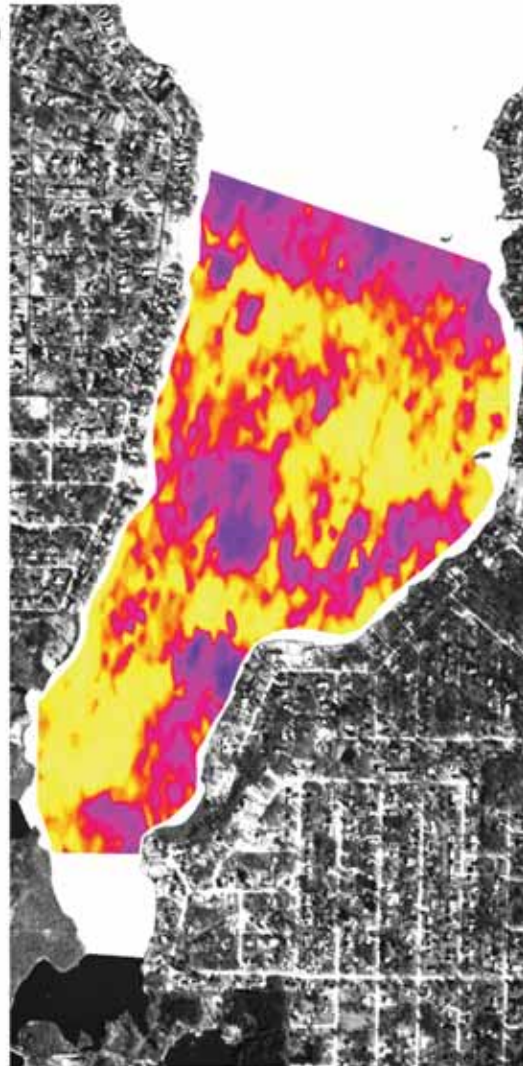
Wonder Lake (Illinois)
August 2010

Chlorophyll A*
(ug/L)



*Surface Water (Approx. 0.5 ft depth)
Estimated using YSI 6025 Chlorophyll
sensor post-calibrated using
Chlorophyll A lab sample

*Mean Water Surface Elevation During Survey: 800.77 ft NGVD29
*Threatened Area subject to reversion



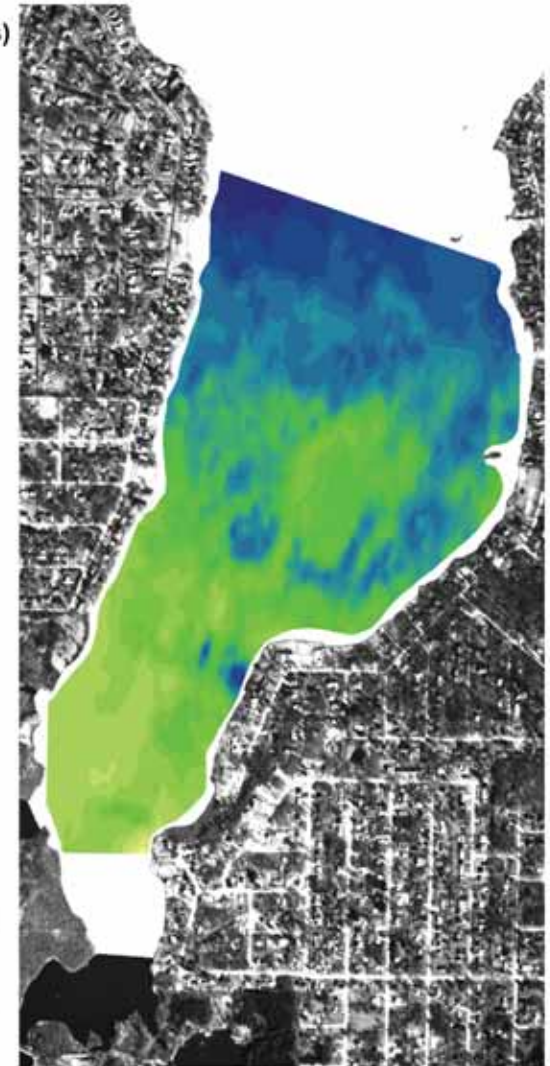
Wonder Lake (Illinois)
August 2010

Blue-Green Algae*
(cells/mL)



*Surface Water (Approx. 0.5 ft depth)
Estimated using YSI 6131 Phycocyanin
sensor calibrated using DI water (zero-
point calibration for relative
concentrations)

*Mean Water Surface Elevation During Survey: 800.77 ft NGVD29
*Threatened Area subject to reversion





The Next Step

- Compare and contrast USGS synoptic data with Ecolipalooza™, IEPA , VLMP, and MCDH data to better understand the system
- Compare synoptic data with long-term monitoring data
 - Do distributions explain variations seen between sampling sites?
- Assess data gaps and fill if necessary



Questions?

Contact Information:

Ryan Jackson

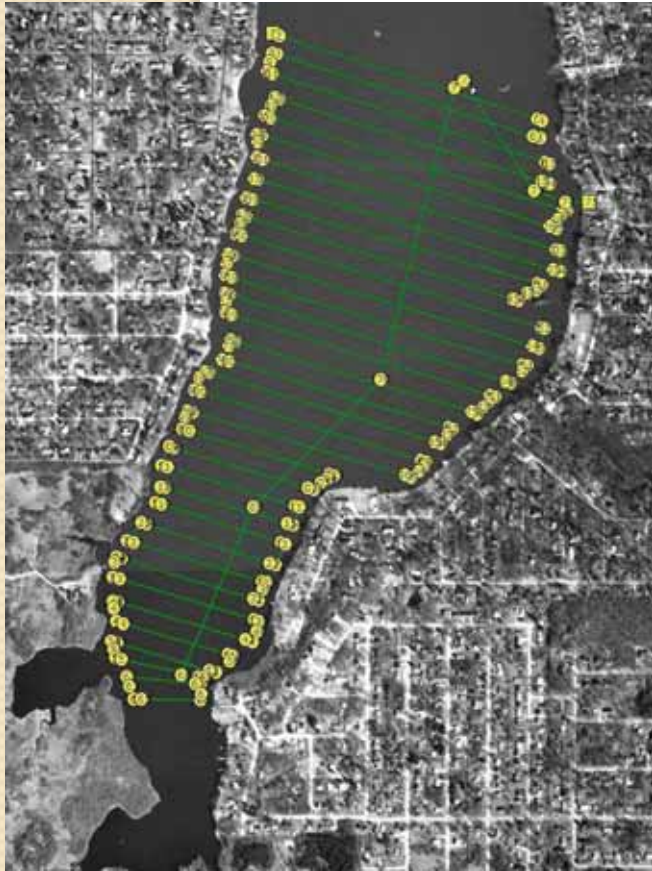
Hydrologist, USGS Illinois Water Science Center
pjackson@usgs.gov

Randy Stowe

Lake Manager, Wonder Lake
lakemanager@gmail.com

Survey Missions

South



Mid



North

